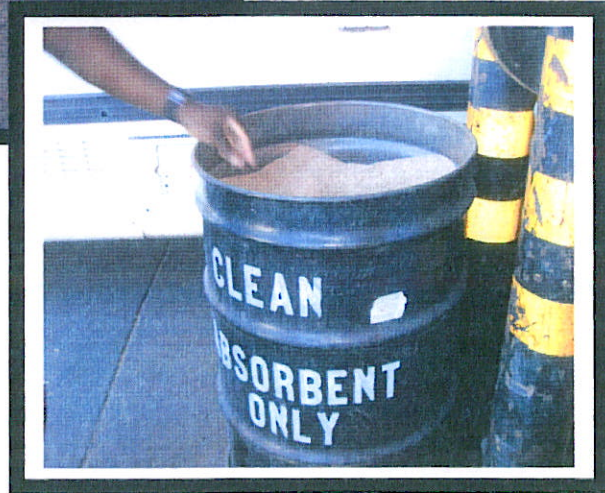
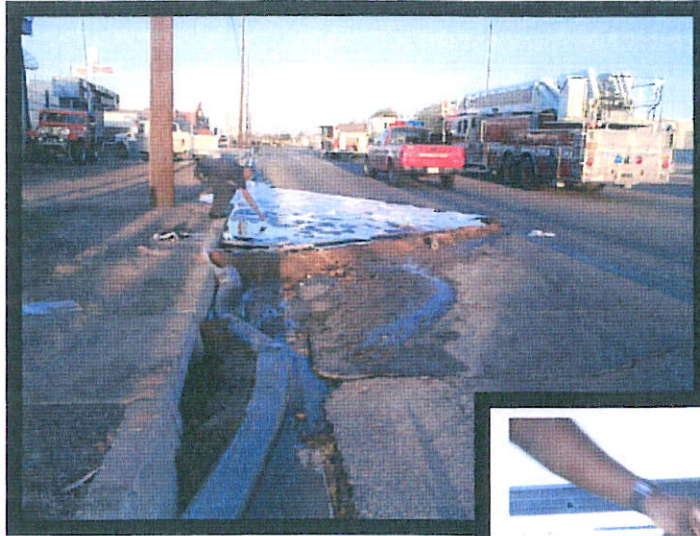


CHAPTER 2: MEASURES TO CONTROL ILLICIT DISCHARGES AND ILLEGAL DUMPING TO STORMDRAINS



- ❖ 2.1 Illicit Discharge Control
- ❖ 2.2 Field Screening Program
- ❖ 2.3 Investigating Potential Illicit Discharges
- ❖ 2.4 Spill Prevention and Response
- ❖ 2.5 Public Awareness and Reporting
- ❖ 2.6 Used Oils and Toxics Control Measures
- ❖ 2.7 Sanitary Sewage Exfiltration Controls